

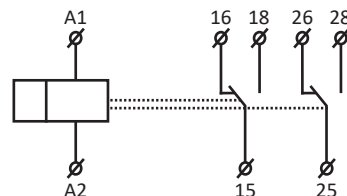
Timetec-RTAstro

Timer with built-in Astronomical Clock



The Timetec-RTAstro is a 2-channel Time Switch used for controlling different loads according to sunrise and sunset times based on geographical location. The Time Switch can be used to control various appliances in real time, such as, switching of heating, pumps, ventilation systems etc. The timer operates all year round without the need for maintenance, with minimum operating costs and maximum savings of electrical energy.

- The 2-channel design allows independent control of two separate circuits
- AUTO (PROGRAM or RANDOM), HOLIDAY, MANUAL, ASTRO and TIME PROGRAM switching modes
- Memory capacity for 100 time programs (common for both channels)
- Programming can be performed when the power is on or in backup mode (when running on backup battery)
- Output relays only operate when the device is powered (but will not operate when on backup battery)
- Selection of automatic switching between summer / winter time based on the set geographical location
- Backlit LCD display
- Simple and easy setup using 4 control buttons
- Sealable transparent cover on the front panel
- The timer has a backup battery that preserves data in case of a power supply failure (backup time reserved up to 3 years)
- Supply voltage: 230Vac
- 2-module width, DIN-Rail mounting



Order Code

Timetec-RTAstro

Timetec-RTAstro Technical Specification

Supply Terminals	A1 - A2
Supply Voltage	230Vac (50 - 60Hz)
Consumption	AC max. 14VA / 2W
Max. Dissipated Power (Un + Terminals)	5W
Supply Voltage Tolerance	-15%, +10%
Real Time Back-Up	Yes
Summer / Winter Time	Automatic
Real Time Back-Up	Up to 3 Years
Accuracy	Max. $\pm 1s/day$ at 23°C
Minimum Interval	1 min
Data Stored for	Min. 10 Years
Changeover Contacts	2 x Changeover / SPDT (AgSnO ₂)
Rated Current	16A / AC1*
Breaking Capacity	4000VA / AC1, 384W / DC

* If the relay is ON constantly (or a large proportion of time) with a full load at or approaching 16A / AC1 and the ambient temperature is at or approaching 55°C, the relay should be wired with wire or cable with an insulation temperature rating of at least 105°C.

Timetec-RTAstro Technical Specification

Peak Current	30A / < 3s
Switching Voltage	250Vac / 24Vdc
Mechanical Life	15,000,000 Cycles
Electrical Life (AC1)	35,000 Cycles
Number of Memory Places	100
Program	Daily, Yearly (up to year 2099)
Data Readout	LCD Display with Backlight
Operating Temperature	-20°C to +55°C**
Storage Temperature	-30°C to +70°C
Electrical Strength	4kV (Supply - Output)
Operating Position	Any
Mounting	DIN-Rail EN 60715
Protection Degree	IP40 from Front Panel / IP10 Terminals
Overvoltage Category	III
Pollution Degree	2
Max. Cable Size (mm ²)	Solid Wire max. 2x 2.5 or 1x 4 / Stranded Wire with Ferrule max. 1x 2.5 or 2x 1.5 (AWG 12)
Dimensions	90 x 35 x 64mm
Weight	128g
Standards	EN 61812-1, EN 61010-1

** With ambient temperature nearing -20°C, the display quality may be compromised, however, this does not affect the timer's function.